



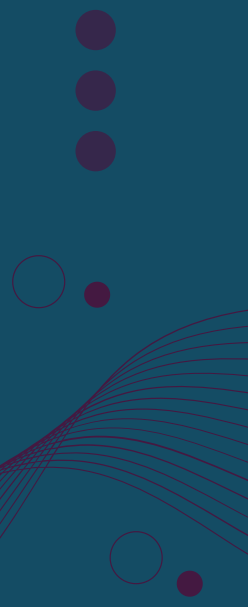
# Information Book

a guide for parents



**2024**

We celebrate diversity  
and inspire students  
to be life-long  
learners





20 Recreation Drive, Eaton WA 6232



9796 7000



0408 930 197 (SMS for Student Absences)



[www.eatoncc.wa.edu.au](http://www.eatoncc.wa.edu.au)



[Eaton.CC@education.wa.edu.au](mailto:Eaton.CC@education.wa.edu.au)



[@eatoncommunitycollege](https://www.facebook.com/eatoncommunitycollege)



[@eaton.cc](https://www.instagram.com/eaton.cc)

Dear Parents/Guardians

Welcome to Eaton Community College, the following booklet contains a broad range of information to help parents and students throughout the school year. Please find enclosed our expectations, policies, contributions and charges, our team and the important dates you will need to remember.

At ECC we RISE, We are Respectful, We are Inclusive, We Strive for Excellence. We celebrate diversity and inspire students to be life-long learners.

Eaton Community College is a proud local school that aims to work collaboratively with our community.

We wish to assure parents that our efforts have been directed towards keeping costs as low and as equitable as possible and in accordance with the Education Act Regulations.

Parents of students in Years 11 and 12 need to be aware that all upper school course costs are compulsory. Parents are therefore required to **pay the full** costs of their child's education in these year groups.

There will continue to be Financial Assistance of \$350.00 to parents, available through the Secondary Assistance Scheme if you hold a Centrelink Health Care Card, Pensioner Concession Card or Veterans' Affairs Pensioner Concession Card. The application for this support will need to be completed through the College and I would encourage all eligible parents to apply during Term 1 of the school year.

Further information on maximum costs for other optional activities such as excursions, camps and activities has also been provided in this booklet, as well as information on reporting absences, our dress code and where to purchase uniform.

Thank you for being a part of the Eaton Community College community.



Gail Allen  
Principal



## **SCHOOL DATES 2024**

Term 1: Wednesday 31st January - Thursday 28th March

Term 2: Monday 15th April - Friday 28th June

Term 3: Tuesday 16th July - Friday 20th September

Term 4: Tuesday 8th October - Thursday 12th December

## **STUDENT FREE DAYS 2024**

Monday 29th January

Tuesday 30th January

Friday 26th April

Monday 15th July

Monday 7th October

Friday 13th December

## **PUBLIC HOLIDAYS 2024**

Monday 1st January – New Year’s Day Holiday

Friday 26th January – Australia Day Holiday

Monday 4th March – Labour Day

Friday 29th March – Good Friday

Monday 1st April – Easter Monday

Thursday 25th April – Anzac Day

Monday 3rd June – Western Australia Day

Monday 23rd September – King’s Birthday

Wednesday 25th December – Christmas Day

Thursday 26th December – Boxing Day

## **SCHOOL BELL TIMES**

Period 1	8:40 AM	-	9:44 AM
Period 2	9:44 AM	-	10:48 AM
Lunch 1	10:48 AM	-	11:18 AM
Period 3	11:18 AM	-	12:22 PM
Period 4	12:22 PM	-	1:26 PM
Lunch 2	1:26 PM	-	1:56 PM
Period 5	1:56 PM	-	3:00 PM



## ADMINISTRATION

Principal	Gail Allen
Deputy Principal	Pippa Herbert
Deputy Principal	Keia Hadden/Dani Grant
Deputy Principal	Daniel Grayce
Manager Corporate Services	Kane Mack

## STUDENT SERVICES

SS Program Coordinator	Tania Meintanis
SAER-Years 7-9	Natalie Aylmore
SAER-Years 10-12	Tonia Gelmi
Aboriginal Ed Support Coordinator	Lois Little
Student Support Coordinator	Ben Lassonde
Student Support Officer	Teschna Taylor
Attendance Officer	Kelly Stevens

## HEAD of LEARNING AREAS

English	Danielle Grant
Maths	Stephen Dennis
Humanities and Social Sciences	Shakira Walsh
Arts	Nichole Lubcke
Health and Physical Education	Shirley Oosting
Science	Malcolm Page
Technologies	Alison Burton
Specialised Learning Program	Olive Brittain

# Student Services

Supporting students is an integral part of our approach to learning at Eaton Community College.

Student Services provides necessary support to those students who are experiencing social and emotional challenges and those who require behaviour support and intervention. The team works through a therapeutic care model that emphasises support for:

- Positive behaviour support
- Restorative justice
- Trauma informed practice
- Whole school support planning
- Counselling
- Mediation and conflict resolution

## Attendance

### SMS Communication - 0408 930 197 (save this number)

- SMS is used as a fast and effective way to communicate to parents/guardians.
- It is a computer program that will notify you of unexplained absences or other messages.
- Parents may SMS in advance of upcoming absences, including illness, appointments, etc.
- Please respond to absentee SMS's as soon as possible, and this can be done at any time (day or night) e.g. *Jane Citizen Year 9 25th Feb - Sick*

*1 or 3 days a week doesn't seem like much but...*

If your child misses	That equals	Which is	Over 13 years of school that is
Half a day per week	20 days per year	1 month per school year	Almost 1.5 school years
1 day per week	40 days per year	2 months per school year	Almost 2.5 school years
2 days per week	80 days per year	4 months per school year	Over 5 school years
3 days per week	120 days per year	Over half a school year	Almost 8 school years

**ATTENDANCE DOES MATTER. EVERY DAY COUNTS!**

At Eaton Community College we embrace R.I.S.E where we are Respectful, we are Inclusive and we Strive for Excellence. We commit to building positive relationships and maintaining a culture of care and support. We work in partnership with students, their parents/caregivers and our local community to establish and maintain shared expectations and responsibility for our code of conduct within our college community.



# At ECC we RISE



BEHAVIOUR MATRIX	We are <b>RESPECTFUL</b>	We are <b>INCLUSIVE</b>	We <b>STRIVE</b>	For <b>EXCELLENCE</b>
<b>At School &amp; Community</b>	<ul style="list-style-type: none"> <li>Listen to and follow all instructions</li> <li>Use appropriate language, volume and tone</li> <li>Be considerate of others</li> </ul>	<ul style="list-style-type: none"> <li>Resolve conflicts maturely</li> <li>Accept and celebrate differences</li> <li>Wear school uniform with pride</li> </ul>	<ul style="list-style-type: none"> <li>Arrive on time</li> <li>Take responsibility for your own learning</li> </ul>	<ul style="list-style-type: none"> <li>Demonstrate good study habits</li> <li>Celebrate and encourage successes</li> <li>Regularly attend school</li> </ul>
<b>Class Time</b>	<ul style="list-style-type: none"> <li>Allow others to learn</li> <li>Use equipment appropriately</li> </ul>	<ul style="list-style-type: none"> <li>Use good manners</li> <li>Maintain personal space</li> </ul>	<ul style="list-style-type: none"> <li>Be prepared</li> <li>Actively engage</li> <li>Participate positively</li> <li>Persist with challenging tasks</li> </ul>	<ul style="list-style-type: none"> <li>Complete tasks to the best of your ability</li> <li>Submit tasks on time</li> </ul>
<b>Breaks &amp; Between Class</b>	<ul style="list-style-type: none"> <li>Put rubbish in the bin</li> <li>Behave responsibly and safely</li> </ul>	<ul style="list-style-type: none"> <li>Interact positively with others</li> </ul>	<ul style="list-style-type: none"> <li>Make healthy food and drink choices</li> <li>Use facilities as intended</li> </ul>	<ul style="list-style-type: none"> <li>Move quickly and quietly between classes</li> <li>Stay on school grounds</li> </ul>
<b>Technology</b>	<ul style="list-style-type: none"> <li>Use technology only with permission</li> <li>Treat MacBook with care</li> </ul>	<ul style="list-style-type: none"> <li>Record and photograph others appropriately</li> <li>Be accountable for what you post and send</li> </ul>	<ul style="list-style-type: none"> <li>Earphones, smartwatches and phones off and away</li> </ul>	<ul style="list-style-type: none"> <li>Utilise ICT to enrich learning</li> </ul>

## DRESS CODE

A dress code allows all students to be equal; there is no demand on any student to keep up with the fashions or to show membership of a particular group. As members of this community, it is necessary to have a sense of belonging and identity. The way in which we support our dress code tells others in the wider community how we feel about ourselves and the College we belong to. It also allows staff to ensure security of students in their care through an effective means of identification both within and external to the College grounds.

Year 7-10	School shirt: NAVY BLUE shirt with teal side inserts, gold piping, College logo. School Jacket: NAVY BLUE microfibre jacket with cinnamon stripe on arms and gold piping, College logo. School Jumper: NAVY BLUE hooded jumper or rugby jumper, College logo.
Year 10-12	School Shirt: WHITE shirt with teal side inserts, or NAVY-BLUE shirt with teal inserts, gold piping, College logo. School Jacket: NAVY BLUE microfibre jacket with cinnamon stripe on arms and gold piping, College logo. School Jumper: NAVY BLUE hooded jumper or rugby jumper, College logo.
Bottoms	School Track Pants: NAVY BLUE with school logo. NAVY BLUE or BLACK pants, skirts, or shorts- no denim, no leggings, no large logo, & must be an appropriate length.
Footwear	Enclosed shoe or jogger and sandals with a heel strap, except when working in 'practical areas' eg: Technologies, Home Economics, Physical Education, Science, Visual Arts, when enclosed shoes MUST be worn.
Physical Education	NAVY BLUE P.E. shorts and ECC P.E. sport shirt. (Note: students must change for Phys Ed)
Special Edition Garments	Items to conform to the College colours and be approved by the Administration, College Board and P & C.
Make Up & Jewellery	Excessive make-up and jewellery are not permitted.
Free Dress Days	Tops must have sleeves, be full length (not cropped).Pants and skirts should be an appropriate length. No offensive slogans or pictures are allowed
Camps & Excursions	Students attending camps and/or excursions are expected to wear College dress, where appropriate.



All Dress Code items are only available from Uniform Concepts. Any suggestions to change the Dress Code must be submitted in writing to the College Board.

## Uniform Concepts: Bunbury Super Store

### Opening Times

Mon, Wed, Fri 9:00am- 5:00pm  
Saturday 9:00am - 1:00pm  
Closed Tues, Thurs, Sun & Public Holidays

4/118 Spencer Street, Bunbury WA 6230

Visit our store during Term 4 and secure your Back-to-School uniform order with just a \$20 deposit, pay off the balance and collect your order before 25 January to avoid the rush, long queues, and last-minute panic!

Online Ordering available by visiting our website: [nellgray.com.au](http://nellgray.com.au)

Closed for the Festive Season - 16th December to 3rd January

**Health and Safety: There are some areas of the College where Health and Safety rules apply. These areas are Design and Technology, Home Economics, Physical Education, Science and Visual Arts. Requirements in these areas include:**

Hair	Must be tied back or covered appropriately for the area as indicated by staff.
Hats	Recommended for all outdoor activities.
Jewellery	Any items likely to catch or snag are not to be worn. This includes fashion wrist and neck jewellery such as bands, bracelets or necklaces. Students may be asked to remove jewellery before being allowed to play sport.
Shoes	Must be completely enclosed.
Safety Glasses and Masks	Will be supplied by the College where required and they must be worn.

# Homework Policy

At Eaton Community College we believe that homework and study are important aspects to the teaching and learning program provided by the school. Homework can support student achievement by providing opportunity for students to consolidate skills and concepts learned at school.

## **HOMEWORK MAY CONSIST OF:**

- Completing set exercises
- Completing unfinished or missed work from class
- Reviewing and editing written work
- Researching and completing assignments
- Reading and/or viewing texts
- Revision of work completed

When no formal homework or teacher directed activity has been assigned, students should engage in study. This could include writing study notes, summaries, palm cards, mind maps, flowcharts, diagrams and other revision strategies.

## **STUDENTS ARE RESPONSIBLE FOR:**

- Making sure they understand clearly what has to be completed
- Recording homework via diary or other means
- Catching up on any work missed during an absence
- Organising time so that each subject receives a fair share of time available
- Making contact with teachers if they experience difficulty in completing their homework

## PARENTS CAN SUPPORT STUDENTS BY:

- Providing a suitable environment
- Discouraging homework and study being completed in the vicinity of the television, mobile phone or other distractions
- Checking on Connect for information about assessments and course outlines
- Contacting the class teacher with any specific queries about homework
- Encouraging homework and study being completed

## HOW MUCH HOMEWORK & STUDY:

Generally, the following is recommended

Year 7	approximately 2.5 hours per week
Year 8	approximately 3 hours per week
Year 9	approximately 3.5 hours per week
Year 10	between 3.5 to 5 hours per week
Year 11 and 12	

Students studying ATAR subjects need to do a minimum of 3 hours' study per subject per week, each and every week. That means if you are studying 5 ATAR subjects, you need to do a minimum of 15 hours of homework and/or study per week.

Students studying a General course need to do a minimum of 1.5 hours per subject per week, each and every week. That means that six General courses require 9 hours of homework and/or study per week. Homework not only consists of the work given to you by the teacher, but also of a self-directed component. This may include organising your notes, revision, research, exam study, practical study or additional tasks or questions.



# Electronic Device Policy

This policy is about increasing student levels of academic engagement and social connection while they are at school. We want to reduce the pressure and anxiety students feel associated with always needing to respond. Students need the freedom to think, learn and develop positive social skills.

This policy relates to any mobile phone or device that allows access to electronic communications, the internet, music playback or streaming and video playback or streaming. This policy works in conjunction with the “Mac Book agreement” which students sign on enrolment.

## Policy Expectations

- Mobile phones, smart watches and headphones must remain turned off and away in students bags from the time they arrive at school through to when they leave the school grounds at the end of the day.
- Mobile phones and other digital devices are brought to school at the owner’s risk. No liability will be accepted by the school in the event of loss, theft or damage of a device.
- Student must seek permission from their teacher to use their MacBook during class time and must only use their Mac Book as directed by the teacher.
- Phones/devices are not permitted during tests or examinations.
- Reports of all incidents involving inappropriate use of digital devices will be recorded on the student record and managed in line with the school’s Behaviour Management in Schools Policy, including bullying, taking and/or sending images, sending texts etc.



It is understood that at times digital devices and headphones may be used as a valuable learning tool in the classroom. In these instances, students would receive an instruction from the teacher to take out their device. Once the learning activity is complete the device would once again be “Off and Away”.

For all contact required between students and or a family member, the Student Support Officer at Student Services will be available to facilitate all necessary communication. There will be no need for a student to use a mobile phone to contact home during the school day.

This Mobile Phone and Digital Device Policy is an extension of the school Behaviour Management in Schools Policy.

In any instance where a student has a digital device visible entering, or while on school grounds, the following procedures will be followed:



### **FIRST OCCASION**

- The student will hand in their device or headphones to the teacher/staff member
- The teacher/staff member will hand over the device to Student Central at their earliest convenience where it will be logged and stored for the remainder of the day
- At the end of the school day the student will be able to collect the device from Student Central

### **SECOND OCCASION**

- The student will hand in their device or headphones to the teacher/staff member
- The teacher/staff member will hand over the device to Student Central at their earliest convenience where it will be logged and stored for the remainder of the day
- At the end of the school day Parent/Guardian will be able to collect the device from Student Central. The device will not be returned to the student.

If at any time a student refuses to follow the instruction of a staff member, the Behaviour Management in Schools Policy and Procedures will be applied

# MacBook Code of Conduct

Eaton Community College provides the option for a take home MacBook to all students to use while they are enrolled at Eaton Community College for education use. We aim to allocate students a MacBook as soon as possible once they commence at the College.

## MACBOOK GUIDELINES

- Students must ensure the MacBook has the protective cover on at all times.
- Students must adhere to the Eaton Community College Computer Network User Agreement at all times. This includes use of the MacBook out of school hours. The Agreement is available on our website.
- Students are expected to have their MacBook at school every day fully charged.
- The MacBook must be surrendered to the school staff immediately and without question when requested.
- You may not use Eaton Community College's services to harass, bully or intimidate others or create, host or transmit offensive or obscene material.
- Students may not place stickers or use marking pens to write on the MacBook.
- Misuse of the MacBook will result in the equipment being removed from the student.
- MacBook's are to be returned when students leave the school. MacBooks not returned will be considered stolen and the matter referred to the Police for recovery.
- MacBook's are to be kept away from food and drink, both at school and at home.
- Solvents are not to be used to clean the MacBook.
- Students must ensure the MacBook is securely stored at school and home.
- Students should back up data on an external hard drive every day.
- Students are not to install illegal software, change settings or disassemble the MacBook.
- Students must report any issues, damage or faults immediately to student central.
- The MacBook is covered by a manufacturer's warranty and by Risk Cover, the WA Government's insurer while on school grounds.
- If the MacBook is stolen, accidentally damaged (liquid spills, run over or crushed) or destroyed (electrical surges, short circuits) students and parents will be responsible for notifying the Network Support Officers immediately.

# College Payment Options

Payments can be paid at the Administration Office from 8.00am until 3.30pm during the school term.

Pre-payment of Charges and Voluntary Contributions can be made in the office during Term 4 from 8.00am to 3.30pm, up to the last day of school.

College payment days prior to start of Term 1, 2024 are as follows:  
Monday 29 January and Tuesday 30 January, 8.00am to 3.30pm



## DIRECT DEPOSIT via your bank/internet

Account Name: Eaton Community College  
BSB: 066 040  
ACC No: 19900831  
Ref: Surname, Initial, Yr & Reason  
eg. Smith J Yr10 School Charges

**CREDIT CARD** - MasterCard and Visa payments can be made over the phone.

**EFTPOS** - Facilities savings/cheque/credit accounts.

**PAYMENT PLANS** - Arrangements can be made to pay off contributions and charges.

**CENTREPAY** - Payments to the school directly from any Centrelink pension.  
If you have any queries concerning any of these methods of payment, please contact the school on 9796 7000.

# Secondary Assistance Scheme

The West Australian Department of Education provides an allowance to assist eligible families with secondary schooling costs.

Parents/guardians must apply for the Secondary Assistance Scheme (SAS) each school year (annually) – applications do not carry forward to future years.

To be eligible for the allowance the parent/guardian must hold a Services Australia (Centrelink) or Veterans' Affairs card that represents a statement of income for the family.

The allowance consists of two components:

- \* \$115 Clothing Allowance paid directly to the parent/guardian or the school.
- \* \$235 Educational Program Allowance paid directly to the school.

Application is made by the parent or guardian for student/s enrolled in Years 7-12 studying a full time secondary course at a Western Australian public school.

## ELIGIBILITY CRITERIA

Parent or Guardian must hold one of the following cards:

- Centrelink Health Care Card
- Centrelink Pensioner Concession Card
- Veterans' Affairs Pensioner Concession Card

Please Note: The only Veterans' Affairs Card that meets the criteria is a blue card that is issued annually and expires in December each year. This card is income means tested.



The parent/guardian must be the holder of a card that is valid some time during first term. Students must be listed on claimant's card (except for some year 11 and 12 students, or in cases of disability/health reasons). In this instance, the school must sight both concession cards. The only exception to this is when a student holds their own health care card and has been declared independent by Centrelink (e.g. Living Away from Home). In this instance, a letter of confirmation from Centrelink needs to accompany the application. The concession card must not be expired when applying for SAS.

The allowance is paid up to and including the year the student turns 18 years of age i.e. students born in 2005 or before are ineligible in 2024.

## **APPLICATION FORMS**

Application forms should not be altered and are to be completed at the school during Term 1 only. If the form is completed prior to the commencement of Term 1 the school must complete the enrolment confirmation section to confirm attendance. (Forms dated by the school prior to Term 1 will not be accepted). Please ensure you keep a photocopy of the signed form for school records.



## **LATE APPLICATIONS**

Late applications will only be accepted in extenuating circumstances and must be accompanied with a written explanation.

Eligible interstate or overseas students who are enrolled after first term may apply for the allowance. Date of enrolment must be noted on the application.

## **CONTRIBUTIONS AND CHARGES**

Schools will receive the Educational Program Allowance of \$235 for Secondary Assistance recipients. For students in Years 7 and 8, this allowance will continue to cover your Voluntary Contributions. For Year 9 to 12 students, the Allowance will be paid, in the first instance, to Compulsory charges, if there is any balance it will be applied to Voluntary Contributions. Any Charges or Contributions not covered by the Secondary Assistance Scheme will be parental responsibility.

# Voluntary Contributions & Compulsory Charges

All Voluntary Contributions and Compulsory Charges assist in providing an educational program that meets the requirements of the Curriculum and comply with the guidelines issued by the Department of Education and the Education Act.

Our College community is appreciative of the financial support given by parents and guardians which enables staff to continue to offer quality educational programs, at the lowest possible cost to families. The College Board approves and endorses the level of voluntary contributions, compulsory charges, extra cost optional components and voluntary approved requests.

Please note that charges will roll over every year. If you are having payment difficulties, please contact the Manager Corporate Services to arrange a payment plan on 9796 7000.

## **VOLUNTARY CONTRIBUTIONS**

The College is requesting a voluntary contribution of \$235 for each Year 7, 8, 9 and 10 student towards the cost of materials, services and facilities used by students in the educational program. This includes purchase of subject class sets of books, provision of text material, some other consumable materials provided by the College for use in The Arts, Design and Technology, Home Economics, and Science. These contributions make a significant contribution to the quality of the educational program that can be delivered.

## COMPULSORY CHARGES

All senior school (Year 11 and 12) courses attract a compulsory charge. Year 9 and 10 Elective Courses which students have selected attract a compulsory charge. Parents/Guardians are liable for the full cost of these charges.

## EXTERNAL TRAINING PROGRAMS

Some students will have the opportunity to participate in approved external training programs delivered by a Registered Training Organisation (RTO).

As these external programs can often be a high cost item, Eaton Community College are pleased to assist families by subsidising \$1,000.00 towards the cost of one External Program per Student. Any program with a course fee less than \$1,000.00 will be fully subsidised by the College with no cost to parents.

Students enrolled in an external program will be required to pay in full prior to commencement of the external program. Should this payment not be made, students will be placed in a low cost program alternative.



## EXTRA COST OPTIONAL COMPONENTS

These are voluntary courses and activities where a selection is made by the parents or student to participate e.g. social events, excursions, camps, carnivals etc. Please note that these prices are an indication of the most parents would be expected to pay, organisers will be negotiating the best possible price for students.



# Contributions & Charges

## Years 7 and 8

### YEAR 7 VOLUNTARY CONTRIBUTIONS

English	\$ 21.00
Maths	\$ 21.00
Science	\$33.00
HASS	\$ 21.00
HPE	\$ 24.00
Technology*	\$ 60.00
*spread across 6 courses over the year	
Arts	\$ 33.00
LOTE	\$ 22.00
<b>TOTAL</b>	<b>\$235.00</b>

### YEAR 8 VOLUNTARY CONTRIBUTIONS

English	\$ 21.00
Maths	\$ 21.00
Science	\$33.00
HASS	\$ 21.00
HPE	\$ 24.00
Technology*	\$ 60.00
*spread across 6 courses over the year	
Arts	\$ 33.00
LOTE	\$ 22.00
<b>TOTAL</b>	<b>\$235.00</b>



# Voluntary Contributions Years 9 and 10



## YEAR 9 VOLUNTARY CONTRIBUTIONS

English	\$ 33.00
Maths	\$ 33.00
Science	\$33.00
HASS	\$ 33.00
HPE	\$ 33.00
Library	\$ 10.00
Electives *	\$ 60.00

\*spread across 6 courses for the year

**TOTAL \$235.00**

## YEAR 10 VOLUNTARY CONTRIBUTIONS

English	\$ 33.00
Maths	\$ 33.00
Science	\$33.00
HASS	\$ 33.00
HPE	\$ 33.00
Library	\$ 10.00
Electives *	\$ 60.00

\*spread across 6 courses for the year

**TOTAL \$235.00**

All core subjects for Year 9 and 10 incur a Voluntary Contribution.  
All Elective subjects for Year 9 and 10 incur a Compulsory Charge, which remains on your account until the debt is addressed.

# Compulsory Charges Year 9



## COMPULSORY CHARGES

Drama: Acting for Screen (Yr 9)	\$ 24.00
Drama: Acting for Stage (Yr 9)	\$ 24.00
Media: Photography & Film (Yr 9) (Semester 1)	\$ 22.00
Media: Stop Motion and Animation (Yr 9) (Semester 2)	\$ 22.00
Visual Art: 2D Art – Drawing Faces and Places (Yr 9) (Semester 1)	\$ 37.00
Visual Art: 2D Art - Paint me Happy (Yr 9) (Semester 2)	\$ 40.00
Visual Art: 3D Art – Ceramics and Sculpture (Yr 9) (Semester 1)	\$ 55.00
Visual Art: 3D Art - Jewellery Making and Design (Yr 9) (Semester 2)	\$ 30.00
Advanced HPE AFL (Semester 1) and (Semester 2)	\$ 50.00
Advanced HPE Netball (Semester 1) and (Semester 2)	\$ 50.00
Advanced HPE Basketball (Semester 1) and (Semester 2)	\$ 50.00
Outdoor Education – Yr 9 (Semester)	\$ 166.00
Advanced HPE CrossFit – Full Year Course	\$ 110.00
HPE Active Pursuits Yr 9 and 10 (Semester)	\$ 120.00
HPE Leisure Pursuits Yr 9 and 10 (Semester)	\$ 120.00
Japanese Yr 9 – Full Year Course	\$ 1.00
Careers Yr 9	\$ 20.00
Let's Craft (Semester 1) – Yr 9	\$ 50.00
Let's Craft (Semester 2) – Yr 9	\$ 50.00
Let's Sew (Semester 1) – Yr 9	\$ 50.00
Caring for Babies Yr 9 (Semester 1)	\$ 40.00
Caring For Children Yr 9 (Semester 2)	\$ 40.00
ICT: Digital Creation Yr 9 (Semester 1)	\$ 40.00
ICT: Drones, Robots and Electronics Yr 9 (Semester 2)	\$ 40.00
Food and Fitness Yr 9 (Semester 2)	\$ 65.00
Food Camp Cooking Yr 9 (Semester 1)	\$ 60.00
Food MasterChefs Yr 9 (Semester 2)	\$ 65.00
Timber Yr 9 (Semester 1)	\$ 52.00
Design and Woodwork Yr 9 (Semester 2)	\$ 75.00
ICT: CAD, Cars and Drag Racing Yr 9 (Semester 1)	\$ 70.00
ICT: Creating with Technology Yr 9 (Semester 1)	\$ 60.00
Under the Sea Yr 9 (Underwater ROV Challenge) (Semester 2)	\$ 70.00



# Compulsory Charges Year 10

## COMPULSORY CHARGES

Drama: Developing a Production (Yr 10)	\$ 24.00
Drama: Putting on a Show (Yr 10)	\$ 24.00
Media: Fact or Fiction (Yr 10) (Semester 2)	\$ 27.00
Media: Manipulating image and time (Yr 10) (Semester 1)	\$ 27.00
Visual Art: 2D Art – Mix It Up! Mixed Media Art (Yr 10) (Semester 1)	\$ 35.00
Visual Art: 2D Art – Street Art and Printmaking (Yr 10) (Semester 2)	\$ 40.00
Visual Art: 3D Art – Trash or Treasure Recycled Art (Yr 10) (Semester 2)	\$ 22.00
Visual Art: 3D Art – Functional Ceramics (Yr 10) (Semester 1)	\$ 55.00
Design: Photography Year 10 (Semester 1)	\$ 27.00
Design: Graphic Design Year 10 (Semester 2)	\$ 27.00
Advanced HPE AFL (Semester 1) and (Semester 2)	\$ 50.00
Advanced HPE Netball (Semester 1) and (Semester 2)	\$ 50.00
Advanced HPE Basketball (Semester 1) and (Semester 2)	\$ 50.00
Advanced HPE CrossFit – Full Year Course	\$ 110.00
Outdoor Education – Year 10 (Semester)	\$ 166.00
HPE Active Pursuits Yr 9 and 10 (Semester)	\$ 120.00
HPE Leisure Pursuits Yr 9 and 10 (Semester)	\$ 120.00
Japanese Yr 10 – Full Year Course	\$ 1.00
Living off the Land – Yr 10 (Semester 1)	\$ 40.00
Sustaining Life – Yr 10 (Semester 2)	\$ 40.00
Scrapbooking and Beyond (Semester 1) – Yr 10	\$ 50.00
Scrapbooking and Beyond (Semester 2) – Yr 10	\$ 50.00
Fashion Yr 10 (Semester 1)	\$ 50.00
Textile Art Yr 10 (Semester 2)	\$ 50.00
Child Development Yr 10 (Semester 1)	\$ 40.00
Learning through Play Yr 10 (Semester 2)	\$ 40.00
ICT: Digital Generation Yr 10 (Semester 1)	\$ 40.00
ICT: Drone Racing and Robotics Yr 10 (Semester 2)	\$ 40.00
ICT: Design and Construction Yr 10 (Semester 2)	\$ 65.00
ICT: Light it Up Yr 10 (Semester 1)	\$ 60.00
Food Café Culture Yr 10	\$ 75.00
Timber Yr 10 (Semester 1)	\$ 60.00
Timber Yr 10 (Semester 2)	\$ 62.00
Under the Sea Yr 9 (Underwater ROV Challenge) (Semester 2)	\$ 70.00



# Compulsory Charges Years 11 and 12

## COMPULSORY CHARGES

<b>ENGLISH</b>	English General 11	\$ 27.00	
	English General 12	\$ 32.00	
	English Foundation	\$ 23.00	
	English ATAR 11	\$ 41.00	
	English ATAR 12	\$ 41.00	
<b>MATHEMATICS</b>	Mathematics Essentials	\$ 35.00	
	Mathematics Applications	\$ 36.00	
	Mathematics Methods	\$ 36.00	
	Mathematics Foundation	\$ 35.00	
<b>SCIENCE</b>	Marine and Maritime Studies General	\$ 211.00	
	Biology ATAR	\$ 54.00	
	Physics ATAR 11 and 12	\$ 54.00	
	Human Biology ATAR	\$ 59.00	
	Chemistry ATAR	\$ 63.00	
	Human Biology General	\$ 59.00	
<b>HASS</b>	Career and Enterprise General 11 & 12	\$ 50.00	
	Ancient History General	\$ 50.00	
	Politics and Law ATAR	\$ 50.00	
	Modern History ATAR	\$ 50.00	
	Psychology General	\$ 50.00	
<b>HPE</b>	Physical Education Studies General GEPES/GTPES	\$ 35.00	
	Health Studies General GEHEA/GTHEA	\$ 35.00	
	Cert II Sports Coaching	\$ 164.00	
	Cert II Outdoor Recreation	\$ 100.00	
	Outdoor Education	\$ 250.00	
	Health Studies ATAR	\$ 200.00	
<b>ARTS</b>	Media Production and Analysis - General	\$ 70.00	
	Photography General	\$ 56.00	
	Visual Arts - General	\$ 126.00	
	Drama General	\$ 80.00	
	Cert II Visual Arts	\$ 156.00	
	Media Production Analysis ATAR	\$ 70.00	
<b>TECHNOLOGIES</b>	Engineering ATAR - Year 11	\$ 230.00	
	Engineering Studies - General	\$ 230.00	
	Certificate II Hospitality	\$ 295.00	
	Children, Family and Community - General	\$ 110.00	
	Food, Science Technology - General	\$ 250.00	
	Material D&T Wood	\$ 198.00	
<b>VET</b>	Cert II Skills 4 Work	\$ 80.00	
	Cert III Education Support	\$ 100.00	
	Cert II Applied Digital Technologies	\$ 70.00	
<b>SIDE</b>	All available Subjects	\$ 55.00	



# Optional Activities

The excursions listed below may occur during the 2024 school year.  
Costs are for one (1) excursion unless otherwise stated.

## Year 9 and 10 Students

Engineering	\$60.00
Environmental Science	\$40.00
Physical Science	\$55.00
Media x 2	\$30.00
Visual Art x 2	\$30.00
Advanced HPE: Netball	\$150.00
LOTE	\$25.00
HASS	\$20.00

## Upper School (Years 11 and 12)

### The Arts

Visual Art x 2 ea	\$35.00
Media x 3 ea	\$30.00

### HPE

Certificate II Outdoor Recreation x 3 ea	\$50.00
Outdoor Education x 3 ea	\$50.00

### Science

Physics	\$55.00
Human Biology x 2	\$50.00
Biology ATAR (Camp)	\$200.00
Marine and Maritime	\$300.00

### Technology and Enterprise

Materials Design and Technology	\$50.00
Engineering Studies	\$50.00
Children, Family and Community	\$50.00
Food Science Technology	\$50.00
Certificate II Hospitality x 3 ea	\$50.00
Certificate II Applied Digital	\$50.00

### English

English x 2 ea	\$10.00
----------------	---------

### HASS

Politics and Law	\$50.00
History	\$50.00
Career and Enterprise x 2 ea	\$50.00
Psychology	\$70.00
Japanese	\$50.00





# VOCATIONAL EDUCATION AND TRAINING (VET) QUALIFICATIONS 2024

Course Name	Course Fee	Resource Fee	ECC Subsidy	Cost to Parents	50% Deposit Required
BRTTC Course Offerings					
Certificate II in Automotive Servicing	\$3,250.00	\$320.00	\$1000.00	\$2,570.00	\$1,285.00
Certificate II in Automotive Vocational Preparation	\$2,950.00	\$320.00	\$1000.00	\$2,270.00	\$1,135.00
Certificate II in Building and Construction	NIL	\$320.00	N/A	N/A	N/A
Certificate II in Electrotechnology	NIL	\$320.00	N/A	N/A	N/A
Certificate II in Engineering Pathways	\$2,950.00	\$320.00	\$1000.00	\$2,270.00	\$1,135.00
Certificate II in Hospitality	\$2,450.00	\$320.00	\$1000.00	\$1,770.00	\$885.00
Certificate II in Medical Service First Response	\$2,085.00	\$320.00	\$1000.00	\$1,405.00	\$702.50
Certificate II in Plumbing	NIL	\$320.00	N/A	N/A	N/A
Certificate II in Retail	\$2,250.00	\$320.00	\$1000.00	\$1,570.00	\$785.00
Certificate II in Workplace Skills	\$1,115.00	\$320.00	\$1000.00	\$435.00	\$217.50
Certificate III in Aviation	\$2,300.00	\$320.00	\$1000.00	\$1,620.00	\$810.00
Certificate III in Business	\$1,250.00	\$320.00	\$1000.00	\$570.00	\$285.00
Certificate III in Community Services	\$1,485.00	\$320.00	\$1000.00	\$805.00	\$402.50
Certificate III in Dental Assisting*	\$5,580.00	\$320.00	\$1000.00	\$4,900.00	\$2,450.00
Certificate III in Early Childhood Education and Care	\$1,540.00	\$320.00	\$1000.00	\$860.00	\$430.00
Certificate III in Health Services Assistance	\$2,885.00	\$320.00	\$1000.00	\$2,205.00	\$1,102.50
Certificate III in School Based Education Support	\$1,270.00	\$320.00	\$1000.00	\$590.00	\$295.00
Certificate IV in Business	\$1,320.00	\$320.00	\$1000.00	\$640.00	\$320.00
Certificate IV in Community Services	\$1,590.00	\$320.00	\$1000.00	\$910.00	\$455.00
Certificate IV in Dental Assisting	\$2,790.00	\$320.00	\$1000.00	\$2,110.00	\$1,055.00
Certificate IV in Preparation for Health and Nursing Studies	NIL	N/A	N/A	N/A	N/A
Certificate IV in School Based Education Support	\$1,590.00	\$320.00	\$1000.00	\$910.00	\$455.00

# VOCATIONAL EDUCATION AND TRAINING (VET) QUALIFICATIONS 2024

Course Name	Course Fee	Resource Fee	ECC Subsidy	Cost to Parents	50% Deposit Required
SR TAFE Course Offerings					
Certificate II in Conservation and Ecosystem Management	NIL	N/A	N/A	N/A	N/A
Certificate II in Horticulture	NIL	N/A	N/A	N/A	N/A
Certificate I in Civil Construction	NIL	N/A	N/A	N/A	N/A
Certificate II in Community Services	NIL	N/A	N/A	N/A	N/A
Certificate II in Introduction to Disability Care	NIL	N/A	N/A	N/A	N/A
Certificate II in Sport & Recreation	NIL	N/A	N/A	N/A	N/A
Certificate III in Fitness	NIL	N/A	N/A	N/A	N/A
Certificate II in Retail Cosmetics	NIL	N/A	N/A	N/A	N/A
Certificate II in Salon Assistant	NIL	N/A	N/A	N/A	N/A
Certificate III in Accounts Administration	NIL	N/A	N/A	N/A	N/A
Pre-App Commercial Cookery	NIL	N/A	N/A	N/A	N/A
Certificate II Retail Services	NIL	N/A	N/A	N/A	N/A
Certificate II Tourism	NIL	N/A	N/A	N/A	N/A
Pre-App Building & Construction Bricklaying	NIL	N/A	N/A	N/A	N/A
Pre-App Building & Construction Painting	NIL	N/A	N/A	N/A	N/A
Pre-App Building & Construction Carpentry	NIL	N/A	N/A	N/A	N/A
Pre-App Electrotechnology	NIL	N/A	N/A	N/A	N/A
Certificate II in Engineering Pathways	NIL	N/A	N/A	N/A	N/A
Pre-App Servicing Technology (Light Vehicle Servicing)	NIL	N/A	N/A	N/A	N/A
Pre-App Servicing Technology (Heavy Vehicle Servicing)	NIL	N/A	N/A	N/A	N/A

# Personal Items and Other Services

## PERSONAL ITEMS - Booklist

Personal items will not be available for purchase at the College. Eaton Community College has requested the services of Campion to assist in providing parents with students' personal items.

As outlined on the Personal Items booklist, which can be found on our website, you can order and purchase the items from Campion using either of the two options available. While there is no obligation to use this supplier, participating in this program helps your school community.

**Option 1.** Orders can be completed online at [www.campion.com.au](http://www.campion.com.au)

**Option 2.** Store facilities at Campion Education (Aust) Pty Ltd,  
28 Kembla Way, WILLETTON WA 6155. Phone (08) 6240 2778

## PERSONAL ITEMS - Text Books & Stationery

Parents **will not** be required to purchase textbooks for students in Years 7 to 10, however, they are required to provide the stationery items listed for each subject. Payment of Voluntary Contributions enables the College to purchase class sets of resources which students use in class.

If students lose or damage textbooks or library books they will then be expected to pay for replacement copies.

Parents **will be** required to purchase course books where necessary for Year 11 and 12 courses. The Personal Items list (Book List) incorporates the text and stationery required for each subject. Not all courses require specific texts to be purchased, only those listed on the enclosed book list.

*It is not acceptable for students to start the school year without the required text books and stationery items.*

There may be additional personal items for students attending external training programs through a Registered Training Organisation (RTO). These items may include textbooks, personal protective equipment and specific course equipment, and you will be notified by the RTO directly.

## **DRESS CODE**

All dress code items are available through Uniform Concepts. Uniform Shop opening times are included in this booklet. Pricelist can be found on our website

## **INSTRUMENTAL MUSIC \$110**

Instrumental Music is an additional option to the normal program. Some instruments can be hired from The School of Instrumental Music at an approximate cost of \$100.00 per instrument. The Instrumental Music charge also covers the cost of copyright on music photocopied and other music resources required for student use at an approximate cost of \$10.00.

## **ADDITIONAL MATERIAL COSTS**

A base level of materials will be provided for student projects in the Learning Areas of Arts, LOTE and Technology and Enterprise. If students reach a level, however, where they wish to make something more expensive or special, they will need to either provide the extra materials themselves or pay the school for the extra costs. Parents will be notified of these at the time.

## **LEARNING AREA COMPETITIONS**

Students may be given the opportunity to participate in Science, Mathematics, English and LOTE competitions.



## **WHITE CARD (Workplace Learning) \$80**

This is a Compulsory Construction Site Safety Card for students who go on work placement as a part of Work Place Learning.

## **LAPTOP COVERS \$50.00**

Students issued with a Laptop may be required to purchase a cover at an estimated cost of \$50.

Listed below are estimated costs for OPTIONAL activities that each learning area MAY conduct throughout the year. Students might participate in all or none of these activities, depending on course choices. Please consider these charges accordingly.

### **CANBERRA TRIP - YEAR 10 \$3,500.00**

All students may be offered the opportunity to participate in a trip to Canberra during the year. Price based on 2019 quotes including Government funding and is subject to change.

#### **STUDENT LEADERSHIP ACTIVITIES \$70.00**

Students elected to the Student Leadership Group will participate in a variety of leadership activities. This cost is subsidised by the College.

#### **COUNTRY WEEK \$800.00**

Students who participate will require a College Track Suit and Jacket; these items are in addition to this cost.

#### **CAMPS (Lower School) \$500**

Year group camps may run during the year involving overnight stays. Includes the Albany Basketball Tournament.

#### **SPORTING CARNIVALS/COMPETITIONS (Lower School) \$80.00**

Students may have the opportunity to participate in various sporting carnivals, where transport costs need to be covered.

#### **LOTE ADDITIONAL MATERIALS**

Year 7 to 12 \$20.00  
Materials for cooking as part of cultural understanding.

#### **RISING SUN REWARD ACTIVITIES \$20.00**

Eligible students who wish to participate in reward activities.

#### **EXCURSIONS & INCURSIONS (Lower School) \$250.00**

These one day activities may occur for various curriculum areas throughout the year.

#### **ENTERPRISE PROJECTS \$20.00**

Students may undertake enterprise activities during the year and may need a small initial start-up fund.

#### **YOUTH LITERATURE DAYS \$110.00**

Selected students who participate.

#### **YEAR 12 BALL \$150.00**

Approximate cost of ticket, prices may vary.



# Additional Requests of Parents

## **P&C MEMBERSHIP \$1.00**

The College will collect the \$1.00 membership subscription on behalf of the P&C.

## **P&C DONATION \$25.00 per family**

The College will collect, on behalf of the P&C, voluntary donations of any amount - \$25.00 is simply a nominal figure. The P&C contributes to many worthwhile projects in the College so please consider making a donation, especially if you cannot help in other ways, such as working in the Canteen



## **CHAPLAINCY DONATION \$20.00 per family**

The College employs a Chaplain as part of its pastoral care team. The Chaplain works with students who are experiencing difficulties in their personal life. She is also available to support staff and parents in times of need. Because a Chaplain is not a teacher, some students feel more comfortable in approaching them when they need someone to talk to. It is not, as yet, Department of Education policy to pay the salaries of Chaplains. Chaplains' salaries are raised by donations from the College, the local churches and fundraising. The College would be grateful if you could donate \$20.00 or any amount you think appropriate to the chaplaincy as this will assist in maintaining this valuable service.

## **LIBRARY FUND DONATION - \$10.00 per family**

The College would be most appreciative of any donations that assist in the ongoing cost of providing a diverse collection of books and other resources for our students. Students are issued with a library card upon enrolment. Replacement of library cards will incur a \$5.00 replacement fee, payable at the time of replacement

## **STUDENT SMARTRIDER**

As a student of Eaton Community College you can order your Student SmartRider from the Library. Students are given an initial card free of charge; a replacement card will cost \$5.00.

# Other Services

## LOCKERS

The College has a limited number of lockers and these will be made available ,free of charge, to students in Years 9 -12. The locker allocation is generally done within the first week of Term 1. Students will need to register a locker number with Student Services before placing their padlock on the locker. If a locker is found to have a padlock on it and there is no student name recorded, the padlock will be removed.

## COLLEGE YEAR BOOK \$25.00 per copy

It is anticipated that a Year Book may be produced for students to purchase if they wish.

## PHOTOGRAPHS

The College has engaged a photography firm to take photos of all students in Term 1. Parents will have the opportunity to purchase a selection of photos of their choice.



## YEAR 12 LEAVERS JACKET \$130.00

Jacket designed especially for Year 12 students if they wish to purchase, cost is approximate and may vary.

## EDUCATIONAL SUPPORT PROGRAMS \$40.00

Education Support and Special Needs students may have the opportunity to participate in community engagement programs.

# Eaton Community College Board

The Board is charged with the responsibility of setting the long-term future of the school and maintaining oversight of the implementation of the school Business Plan. The School Board does not run the school – that is the job of the Principal, but rather, provides additional expertise to help the school achieve the best outcomes for students. School Boards are made up of 3 member groups being; Parent Members, Community; and Department of Education Employees – who bring their educational expertise to School Board Meetings.

Current Board Members are:

- Mrs Gail Allen – School Principal
- Mrs Linda Cotterell – Department of Education Employee
- Ms Pippa Herbert – Department of Education Employee
  - Mr Kane Mack – Department of Education Employee
    - Mrs Naomi Fink– Parent Member
    - Mrs Ruth Herrmann – Parent Member
- Mr Luke Davies – Shire of Dardanup Councillor
  - Mr Ernie Hill – Community Member
- Mrs Rhonda Norman – Community Member
  - Mrs Niomi Higgs – Community Member

Should you have any queries regarding the School Board, please do not hesitate to contact Kane Mack, Manager Corporate Services, by telephoning the School on 9796 7000.



# P&C Association

Your P&C continues with the special group of parents, teachers and community members who make it to our Monday night meetings twice per term. These meetings take on a relaxed atmosphere, although at the same time we are kept up to date with matters happening around the school and also outside changes that may impact on our students. At the meetings we are able to make decisions and have a real input into the school.

In order for the P&C to continue to assist the school with Canteen Services, School Equipment and donations for assisting with programs such as our Chaplain and Breakfast Club we need new people to commit to attending meetings and taking an interest in the place that has the care and education of your growing children.

A dynamic group that provides essential services to students across the college. The P&C run the canteen and also provide essential funding for school activities and programs. You will get to know the staff, learn about what is going on in the College, have your say and contribute positively to your child's school experience. The P&C Association meet twice per school term at the College. All parents are welcome to attend meetings. Times for these meetings can be found on our website under our school calendar .

## **P&C Fundraising**

The P&C continues to raise funds to support both staff and students of Eaton Community College.

In 2023 funds have been raised to continue our support of programs such as:

- Continued support for Chaplain
- End of Year Awards
- Breakfast Club
- School Ball
- Contributions & Charges payment prize

But in addition to these programs over the years we have been able to make donations to the school for new educational equipment such as a coffee machine to train our new baristas, woodworking equipment for our carpenters, air conditioning for our breakout rooms, photography frames to display students work, cake icing kits, iPads for some art applications and to replace furniture, just to name a few.

## CANTEEN MENU

EFTPOS NOW AVAILABLE

### EVERYDAY SNACKS

Cheesy	\$2.00
Cheesy Combo (Ham & Cheese)	\$2.50
Garlic Bread	\$2.00
Cheesy Garlic Bread	\$1.50
Granola Cup	\$3.00
Cup of Fruit Salad	\$2.50
Assorted Sweet Muffins	\$2.00
Cinnamon, vegemite or pizza scrolls	\$2.50
Assorted fruit	\$1.00

### ROLLS, SANDWICHES & WRAPS

Chicken Tender Wrap with 3 Salads	\$4.50
Chicken Tender Wrap with Cheese, 5 salads	\$5.50
Curried / Plain Egg	\$4.00
Chicken & Salad	\$5.00
Ham & Salad	\$5.00
Tuna & Salad	\$5.00
Add Cheese	\$ .50
Beetroot	\$ .50
Pineapple	\$ .50
Egg	\$ 1.00
Make It Turkish Bread, Add	\$ 2.00

### TOASTED SANDWICHES & JAFFLES

Plain Cheese	\$3.00
Tomato and Cheese	\$3.50
Ham and Cheese	\$4.00
Baked Beans and Cheese	\$3.50
Spaghetti and Cheese	\$3.50
Chicken, Cheese and Mayo	\$4.50
Add pineapple or tomato	\$ .50
bacon	\$1.00
Toasted Flatbreads start from	\$4.00

### SALADS

Salad Plate	
-Consisting of Lettuce, Carrot, Tomato, Cucumber, Beetroot, Capsicum, Cheese and Onion	\$5.50
Meat & Salad Plate	
-Choose Chicken, Ham or Tuna	\$7.50

### HOME MADE MEALS - all prepared on premises

Potato Bake	\$5.00
Macaroni & Cheese	\$5.00
Pasta Bolognese	\$5.00
Lasagne	\$5.00
Lasagne and Salad	\$6.50
Butter Chicken Curry and Rice	\$5.00
Nachos	\$5.50
Soup (Term 2 & 3 only)	\$4.50
-comes with a mini bread roll.	

### WEEKLY SPECIALS

MONDAY	M
Travellers Pies	\$4.00
Four & Twenty Sausage Rolls	\$4.00
Pasties	\$4.50
TUESDAY	T
Mini Hot Dog	\$2.50
Full Hot Dog	\$4.00
Full Hot Dog & Cheese	\$4.50
Kaleb's Hotdog with Cheese & Bacon	\$5.00
WEDNESDAY	W
Homemade Pizzas	
Plain Cheese	\$3.00
Hawaiian	\$4.00
Pepperoni	\$4.00
Sushi	\$5.00
THURSDAY	T
Oven Baked Chips & Gravy	\$4.00
FRIDAY	F
Hash brown	\$1.00
Bacon & Egg Rolls	\$4.50
Bacon, Cheese & Hash Brown Roll	\$5.50
Bacon, Egg, Cheese & Hash brown	\$6.50
Scrambled Egg Wrap - Small	\$4.50
- Large	\$6.00

### BURGERS

Hamburger with Salad	\$6.00
Cheeseburger	\$5.50
Aussie Burger (+Beetroot & Cheese)	\$7.00
Hamburger with Bacon & Egg	\$8.00
Grilled Chicken Burger with Salad	\$6.00
Grilled Chicken Burger with Cheese	\$5.50
Chicken Schnitzel Burger with Salad	\$6.00
Mini Yummy Drummy with Cheese	\$2.50
Yummy Drummy Burger with Cheese	\$5.50
Yummy Drummy Burger with Cheese & Salad	\$6.00
Zinger Burger (Hot n Spicy)	\$5.50
(Salad = lettuce, tomato, carrot)	

### DRINKS

Water	\$2.50
Flavoured Browns Milk 300ml	\$2.50
Flavoured Browns Milk 600ml	\$4.50
Harvey Fresh Juice Box 250ml	\$2.50
Harvey Fresh Juice Bottle 450ml	\$3.50
Mineral Water Fords	\$3.50
Up N Go	\$2.50
Juice Bombs	\$3.00

### ICE CREAM - lunch two only

Assorted Ice creams from	\$2.00
Milo Cups	\$3.50
Froyos (Frozen Yogurt)	\$2.50



YOUR PATHWAY, YOUR WAY

